



Little Moles Nursery Prospectus



Molehill Primary Academy and Little Moles Nursery

are part of Leigh Academies Trust



Leigh Academies Trust is one of the country's largest and most-established multi-academy trusts operating across Kent, Medway and South East London. It contains primary, secondary and special academies and is highly inclusive and successful. Our mission is to deliver "education for a better world" by ensuring that young people in our academies have an excellent start in life regardless of their background or ability.



Our Values

We care -

about our pupils and their families through our human scale approach to education, our staff and their well-being and the world around us, driven by our high ideals and strong moral values.

We have boundless ambition -

to achieve excellence for all and create confident young adults with high levels of resilience and integrity.

We work together -

as one team because we are greater than the sum of our parts. We foster an enterprising culture through global collaboration with partners in business and education.

We keep getting better -

using our 'can-do' attitude towards continuous improvement and innovation.

For admission enquiries telephone: 01622 751729
Or email: littlemoles@molehillprimaryacademy.org.uk

Contents

Use our contents page to navigate your way through our prospectus

- | | | | |
|----|------------------------------------|----|------------------------|
| 03 | Welcome | 07 | The IB Learner Profile |
| 04 | A Day in the Life of a Little Mole | 08 | Uniform |
| 05 | Our Provision | 08 | Forest School |
| 06 | International Baccalaureate | 09 | Snacks and Meals |



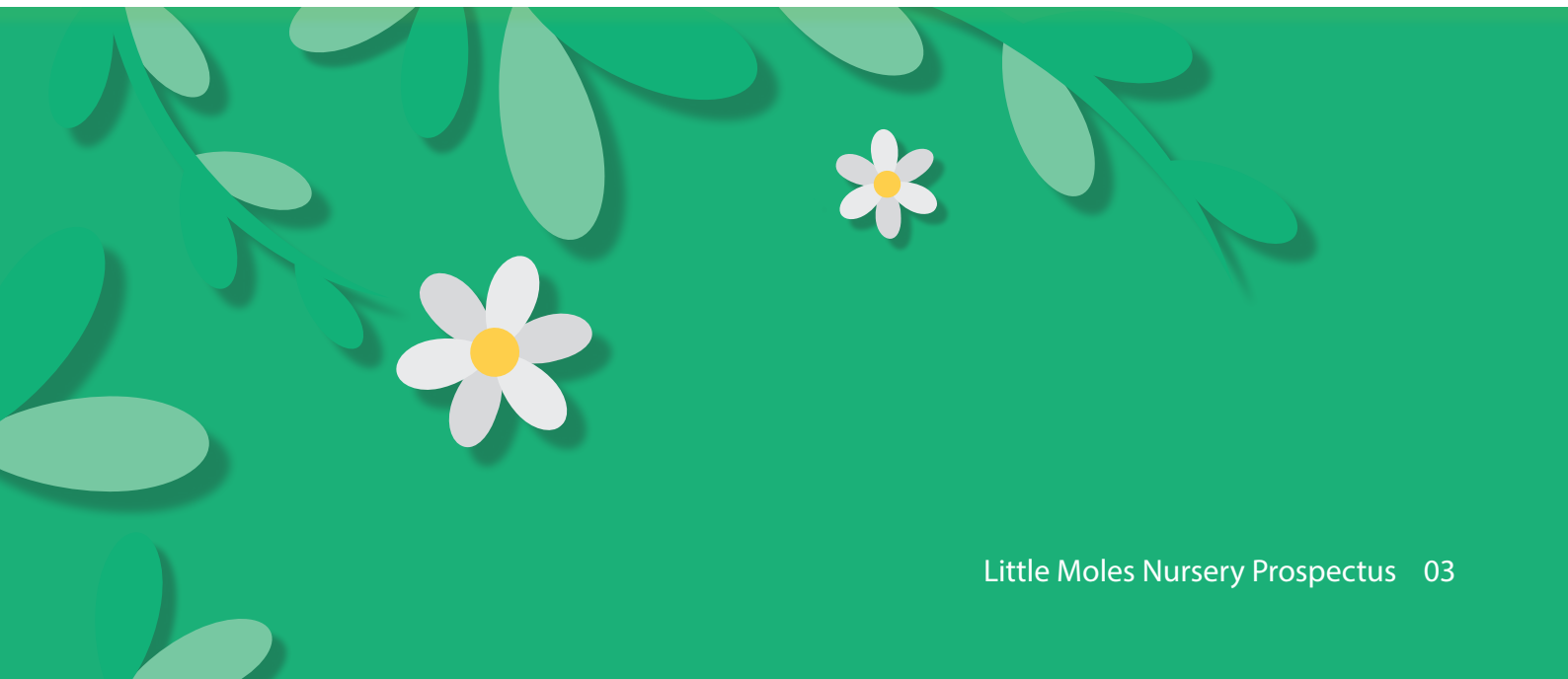
Welcome

Welcome to Little Moles Nursery at Molehill Primary Academy



A warm welcome to Little Moles Nursery at Molehill Primary Academy. The welfare and wellbeing of the children placed in our care is of paramount importance. We take great care in providing a safe, secure and stimulating environment which allows your child to develop confidence, independence and good social skills. We strike a very careful balance between play and learning. We believe that skills that are acquired at an early age provide an excellent foundation; they are the building blocks for their future education and understanding where every child can achieve. Our greatest commitment is to ensure every child reaches their potential. We take pride in inspiring them to achieve their very best within a happy community, in which respect and tolerance for self and others are embedded.

Laura Smith, Principal
Tracey Notley, EYFS Lead



A Day in the Life of a Little Mole

Learning happens from the moment your child arrives. We ensure that your child fosters independence by giving them the space to take charge of their own belongings. We embed a routine to help your child feel secure in knowing what to expect and recognise what will happen throughout their day. In every session we take time to discuss the visual timetable together and it remains on display so that children can always return to look at what will happen next.

Our nursery provides care for children from the age of 3 years and is open Monday to Friday 9.00am-3.00pm. We accept the 15 and 30 hours of free funding from the term after your child's third birthday. We can take up to 26 pupils per session. The cost for a child staying outside of the free sessions (9.00-12.00 or 12.00-3.00) is £5 per hour.

If you are eligible to access the 30 hours of funded childcare, the all day session will run from 9.00am until 3.00pm. Please be aware, all children must be collected promptly, any late collections will result in a charge of £1.00 per minute.



Our Provision

At Little Moles Nursery we have provided a well-structured, safe, active and challenging learning environment, both indoors and outdoors: where children will be able to develop the skills, knowledge and understanding that enables them to be successful learners. We provide an environment which is rich in wonder and allows for memorable experiences that spark children's natural creativity and curiosity to flourish, alongside the purposeful acquisition of skills and knowledge.



Learning is enhanced by adult-led sessions where the children engage in focused learning including phonics, maths and PYP sessions.

Little Moles Nursery uses 'In the Moment Planning'. This allows us to act upon your child's learning and development needs at that moment. Staff will observe children at play and use their skills to support and extend learning.

Each child will build up an online Learning Journey journal using Toddle throughout their time in the Nursery. Learning Journeys are individual to the child and contain photographs and evidence of their learning. As parents you will have access to the online journey throughout the year where you will be able to view and celebrate your child's learning moments, communicate with teachers and receive announcements and updates from the school.

International Baccalaureate

The Primary Years Programme (IB PYP)

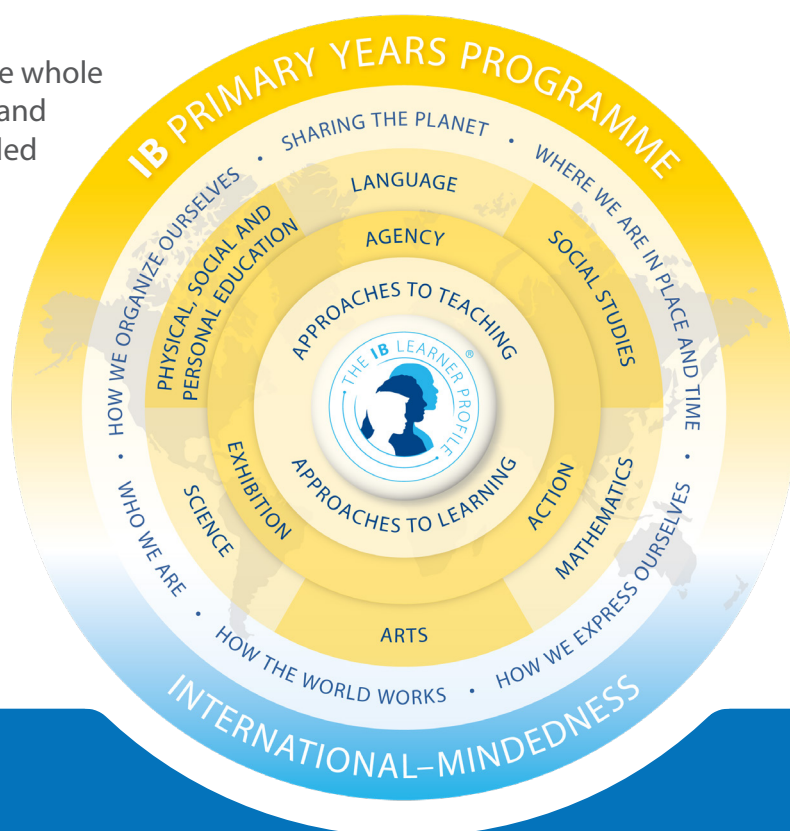
© International
Baccalaureate
Organisation 2018



The Primary Years Programme (PYP) is designed for pupils aged 3 to 12 and is one of four programmes offered by the International Baccalaureate Organisation (IBO).

The PYP focuses on the development of the whole child as an inquirer, both in the classroom and in the world outside. It is a framework guided by six interdisciplinary themes of global significance, explored using knowledge and skills derived from six subject areas, as well as interdisciplinary skills, with a powerful emphasis on inquiry.

The PYP is flexible enough to accommodate the demands of the National Curriculum as this is the curriculum that Molehill Primary Academy will follow.



The PYP:

- Allows integrated development of cognitive and affective skills;
- Enables us to develop a curriculum appropriate to meet pupils learning needs;
- Develops autonomous and critical learners;
- Content is chosen by academies but is delivered within a concept driven curriculum to bring coherence across subjects; and
- Assessment drives learning and teaching positively.

Molehill Primary Academy has been successful in authorization as an IB World School for the Primary Years Programme. These are schools that share a common philosophy: a commitment to high quality, challenging, international education that Molehill Primary Academy believes is important for our students.

For further information about the IB and its programmes, visit www.ibo.org

The IB Learner Profile

© International
Baccalaureate
Organisation 2018



At Molehill Primary Academy we aim to create inquiring, lifelong learners who respect and care for the world they live in and all those who live in it. Our learners understand how they are connected to the world in order to take action to improve their own lives, and the lives of local and global communities, becoming global citizens themselves.

IB Programmes give structured opportunities for pupils to be:



Inquirers

Knowledgeable

Thinkers

Communicators

Principles

Open-minded

Caring

Risk-takers

Balanced

Reflective

Our Uniform

The uniform within our nursery consists of:

- Navy blue sweatshirt/jumper
- Tracksuit or leggings or shorts in the summer (no denim)
- Girls are welcome to wear a navy blue gingham dress during the summer months
- Footwear should be Velcro shoes to promote the children's independence
- Wellies for outdoor/wet activities
- An all weather puddle suit for our Forest School sessions
- A named bag containing a change of clothes should your child need them
- A named water bottle
- A named suntan lotion bottle for the warmer weather.

We ask that all clothing and belongings are clearly named.



Forest School

We are also fortunate to provide our children with a 'forest school' ethos and provision as part of our education. Our trained practitioners enable us to develop additional learning and development opportunities that enrich our curriculum offer for all age groups.

Breakfast Club

We are proud to offer our award-winning Breakfast Club to our Nursery pupils. Breakfast Club costs £2 per session and is available from 8am - 9am.

We provide a wide selection of food and drink, including cereal, toast, juice and a selection of fruits.

Snacks and Meals

A morning and afternoon snack will be provided by the nursery; this includes a piece of fruit and a carton of milk.

If your child is staying for the lunch period they have the choice of bringing a packed lunch from home or having a cooked dinner for an additional cost of £2.45 per day unless they are entitled to an Early Years Pupil Premium free school meal.

Our location

Molehill Primary Academy and Little Moles Nursery are part of our LAT Central cluster.



Our socials

Take a look at our social media to keep up with events and activities happening at our academy.





Molehill Primary Academy
Hereford Road
Maidstone
Kent ME15 7ND

01622 751729
contactus@molehillprimaryacademy.org.uk
molehillprimaryacademy.org.uk



LEIGH
Academies Trust

Education for a better world

Chief Executive: Simon Beamish
BA (Hons) MSc PGCE NPQH NLE FCCT

Carnation Road, Strood, Rochester, Kent ME2 2SX
01634 412200 | fax: 01634 412201
info@latrust.org.uk | leighacademiestrust.org.uk

Leigh Academies Trust is a registered company
(company no 2336587) and an exempt charity.

